

# DEVELOPING THE BIOECONOMY

## A Guide for Local & Regional Authorities

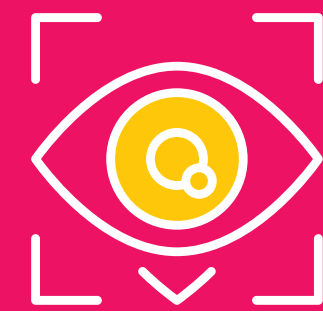
### 1 DETERMINE BIOMASS QUANTITIES & CHARACTERISTICS

Gather data on biomass from agricultural census. What is available? Is pre-treatment required? Consider storage and transport too.



### 2 IDENTIFY TECHNOLOGIES & DEVELOP BUSINESS MODELS

Cascading technologies unlocks the full potential of biomass and offers new business models which derive optimum value from bioresources storage and transport too.



### 3 CONDUCT FEASIBILITY, MARKET & POLICY ANALYSES

The most important aspect to developing a successful bioeconomy initiative is to ensure economic, social, and environmental sustainability.



### 4 ENGAGE LOCAL ENTERPRISES

Bioeconomy should be integrated with Local Economic and Community Plans and County Development Plans, an industry perspective is crucial to achieving commercial success.



### 5 FOSTER INNOVATION SPRINTS

Innovation sprints fostering initial collaborations between industry, local further & higher education institutions, and Innovation clusters can help jump-start bioeconomy projects.



### 6 CREATE KNOWLEDGE NETWORKS

Strong knowledge and communication networks helps stakeholders identify collaborators and opportunities, nurture ideas, and ensure integration of science, technology, and innovation.



### 7 DEVELOP AWARENESS & COMPETENCIES

Develop awareness & competencies within the local authority. Information on the bioeconomy should be communicated at targeted organisations.



This guide has been developed as an output of the Agri Bio Circular (ABC) Economy project at University College Dublin. This project has been jointly funded by Department of Agriculture, Farming & the Marine and Sustainable Energy Authority Ireland under the SEAI National Energy Research, Development and Demonstration Funding Programme 2018, Grant number 18/RDD/365.